



## THINLED 1

COMPACT & POWERFUL LIGHTING

▶ LED LIGHTING SYSTEM ▶ HIGH POWERFUL SPOT LIGHTING ▶ COMPACT LIGHT ▶ CONFINED ENVIRONMENT ▶ QUALITY CONTROL WITH CAMERA

ALL THE LED LIGHTING **POWER**  
ADJUSTED TO **CONFINED ENVIRONMENTS.**

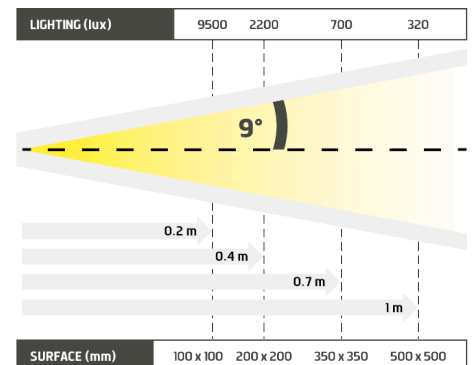


- ✓ Powerful and compact,
- ✓ easy to use,
- ✓ made for confined spaces.

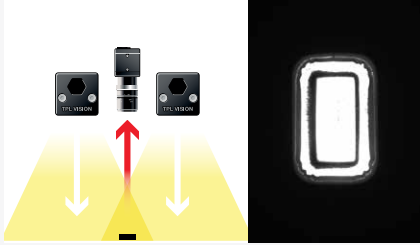
The ThinLED 1 is a miniature spot that provides an incredible lighting, considering its size. Its global shape enables an easy set up. The ThinLED 1 is particularly recommended for controls in small spaces. It can be seriously considered as a competitive alternative to lighting fibre optic : its high powerful led fits the highest production rates. The ThinLED 1 is obviously the key lighting for industrial vision in confined spaces.

Distance	0.2m		0.4m		0.7m		1m	
ThinLED1-WHI	9500 lux	100 x 100 mm	2200 lux	200 x 200 mm	700 lux	350 x 350 mm	320 lux	500 x 500 mm

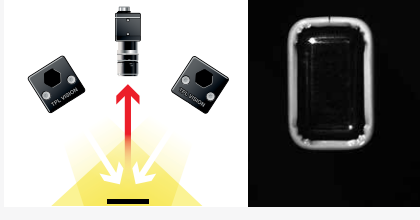
Minimum guaranteed values (white lighting measures)



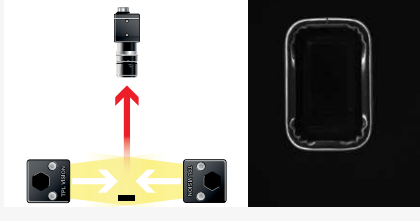
## DIRECT LIGHTING



## DIRECT INCLINED LIGHTING



## DARKFIELD LIGHTING



## TECHNICAL SPECIFICATIONS

Electronics	
Maximum current	350mA Use a current control power supply
Wiring	M8 3 poles female connector
Maximum power	8.5W
Optics	
Colour	White, Red, Green, Blue
Number of Leds	1
Lens	± 9°
Mechanics	
Dimensions	23 x 20 x 13 mm
Weight	27.4 g
Materials	Black anodized aluminum
Fixing	2 holes for screw CHC M3 (not supplied)
Environment	
Operating temperature	0 - 40°C
Storage temperature	0 - 60°C
IP protection	IP 40
Labels	RoHS-CE-WEEE

## ACCESSORIES

### M8 male – 3 pins cable



2 meters	Ref: C-M8-3P-2M-M
5 meters	Ref: C-M8-3P-5M-M
10 meters	On request

## HOW TO BUILD YOUR REFERENCE

REQUIRED SETTINGS

THINLED1

COLOUR

OPTIC ANGLE

**WHI**

**630**

**525**

**470**

**9** ± 9°

**EXAMPLES :**

THINLED1 WHITE LED ± 9° :  
 THINLED1 RED LED ± 9° :  
 THINLED1 BLUE LED ± 9° :

**RESULTS :**

THINLED1-WHI-9  
 THINLED1-630-9  
 THINLED1-470-9

Features and presentations liable to modifications without prior notice. Ref.TS-040501-C2, 2022/11 Edition.

### TPL VISION UK

Brenchley House - School Road - Charing - Kent TN27 0JW - UK  
 Tel. +44 (0)1738 310 392 - contact@tpl-vision.co.uk

[www.tpl-vision.com](http://www.tpl-vision.com)



### Other available documents :

- PDF, DWG, DXF, IGS, STEP & X\_Y DRAWINGS
- USER'S GUIDE

